



RURAL ELECTRIFICATION AGENCY
ENERGY=EMPOWERMENT=EFFICIENCY

2020 Project Impact Report of the Rural Electrification Agency (REA)



RURAL ELECTRIFICATION AGENCY
ENERGY=EMPOWERMENT=EFFICIENCY

2020 Project Impact Report

COVID-19 Intervention


53.1kWp

University of Abuja Teaching
Hospital Isolation Center


20kWp

128-bed Isolation Center,
Ikenne, Ogun State



Powers critical loads
such as ventilators and
cooling systems



Provides electricity to
frontline workers to
function effectively.



Serves as a source of
clean, safe and reliable
energy appropriate for a
healthcare environment.


25kWp

NCDC Public Health Lab,
Lagos


10kWp

100-bed Iberekodo Isolation
Center, Ogun State

Due to the impact of these
interventions and strategic
collaborations in the energy
and health sectors, a plan is
underway to scale-up to 100
isolation centers and 400
Primary Healthcare Centers, to
be deployed in phases.

For more enquiries please contact
info@rea.gov.ng
www.rea.gov.ng



RURAL ELECTRIFICATION AGENCY
ENERGY=EMPOWERMENT=EFFICIENCY

2020 Project Impact Report

Rural Electrification Fund (REF)

REF Call 1 MINI-GRIDS

Ebonyi State

Eka Awoke,
Ebonyi State.

100kWp

Edo State

Solar hybrid mini-grid in
Adebayo community,
Ovia South LGA, Edo
State

100kWp

Gombe State

Solar mini-grid ar Dakkiti
community, Akko LGA,
Gombe State

85kWp

Niger State

Solar hybrid mini-grid
at Goton-Sarki
community, Paikoro
LGA, Niger State

40kWp

100kWp

Ogun State

Solar hybrid mini-grid
at Olooji community,
Ijebu-East, Ogun
State.

100kWp

Oyo State

Solar hybrid mini-grid
at Budo-Are
community, Oyo State

30kWp

Katsina State

Solar hybrid mini-grid
in Bambami village,
Batagarawa LGA,
Katsina.

15,000

Over 15,000 community members across these
communities are benefiting from these installations
deployed under the 1st call of the Rural Electrification Fund

*These interventions have also improved the socio-economic status of these communities
through the stimulation of productive use of electricity*

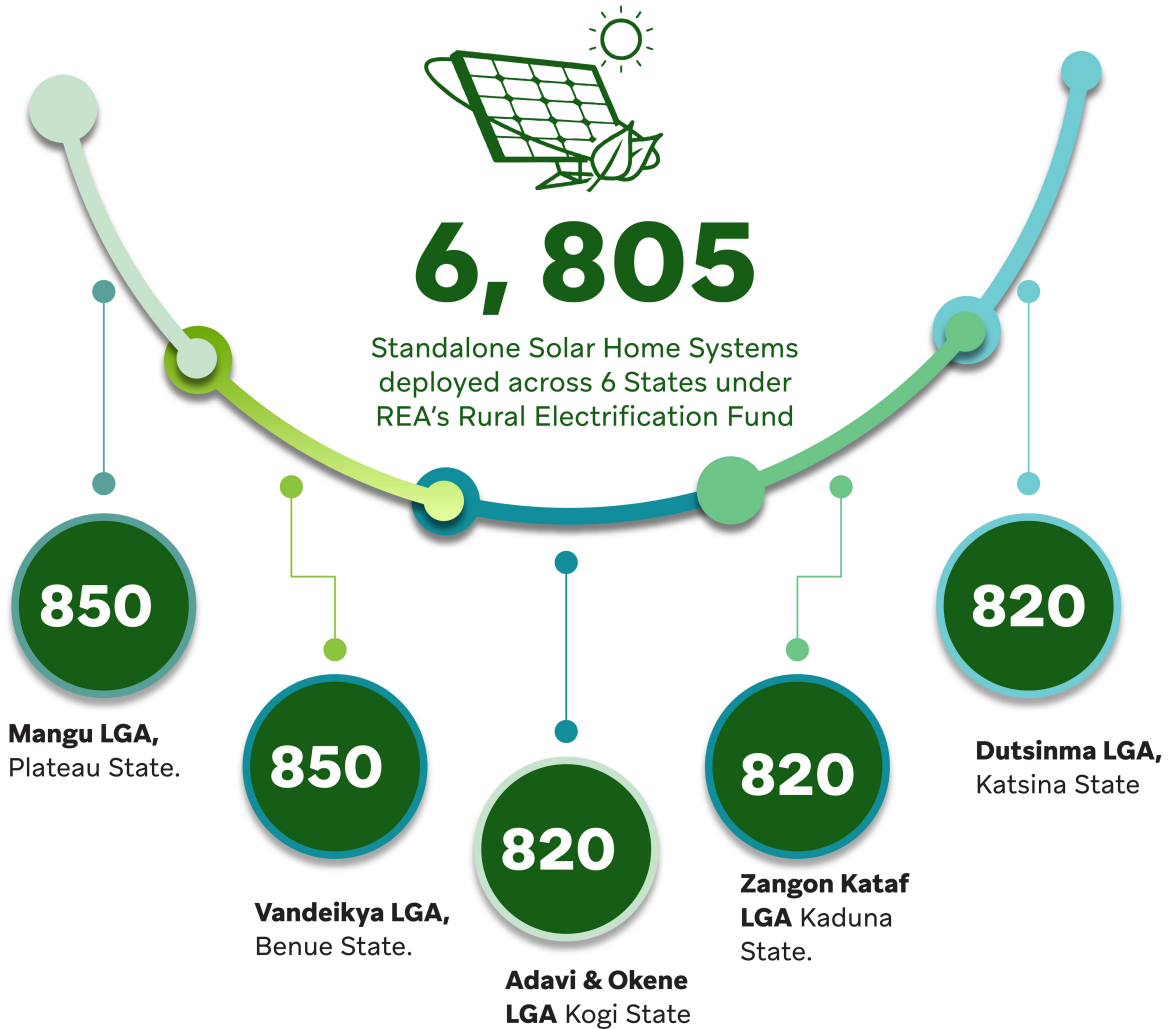
For more enquiries please contact
info@rea.gov.ng
www.rea.gov.ng



RURAL ELECTRIFICATION AGENCY
ENERGY=EMPOWERMENT=EFFICIENCY

2020 Project Impact Report

Rural Electrification Fund (REF)



For more enquiries please contact
info@rea.gov.ng
www.rea.gov.ng

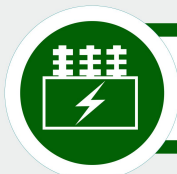


RURAL ELECTRIFICATION AGENCY
ENERGY=EMPOWERMENT=EFFICIENCY

2020 Project Impact Report

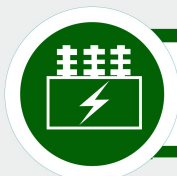
Capital Projects

Grid Extension Projects



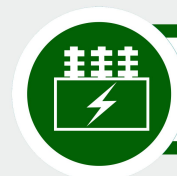
300kVA, 11/0.415kVA transformer.

Ajilola-Anabi community, Ede-South, Osun State



33/0.415kV Sub-station

Ungwar Dutse community, Malumfashi, Katsina State



300kVA, 11/0.415kVA transformer.

Joint Hospital, Ozubulu, Ikwusigo, Anambra State

These interventions are currently serving **over 4,000 residents** in these communities

Solar Mini-Grids



65kWp Solar Mini-Grid

*250-bed cottage hospital at Okpogo community,
Okene LGA, Kogi State*



5.4kWp Solar Mini-Grid

Government Cottage Hospital, Adavi Eba, Adavi LGA, Kogi State

These interventions are sufficiently serving these hospitals by powering critical loads and ensuring the delivery of quality healthcare services to the people of the communities

For more enquiries please contact

info@rea.gov.ng

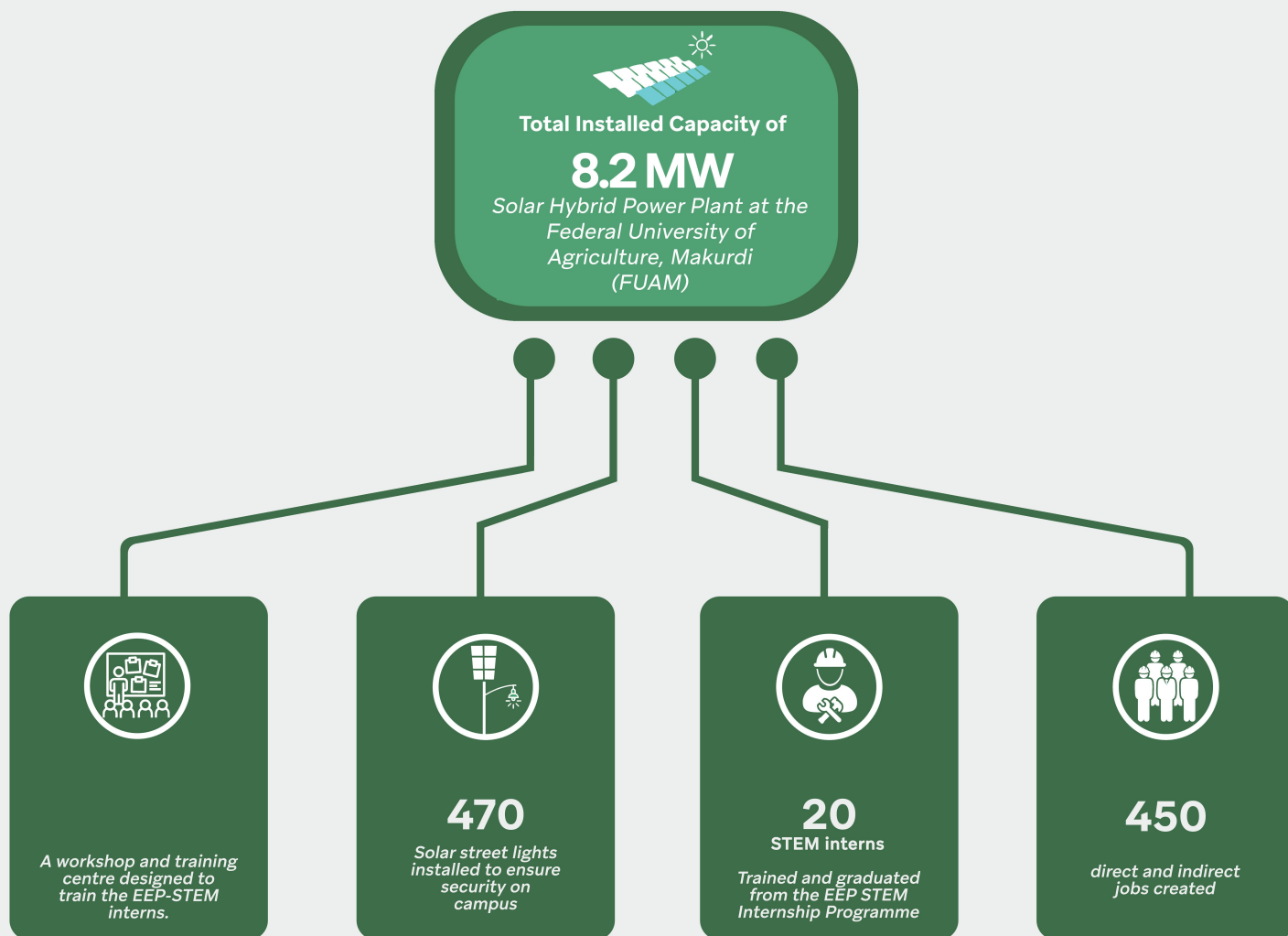
www.rea.gov.ng



RURAL ELECTRIFICATION AGENCY
ENERGY=EMPOWERMENT=EFFICIENCY

2020 Project Impact Report

Energizing Education Programme (EEP)



This project is serving over 17,000 students and staff members of the university

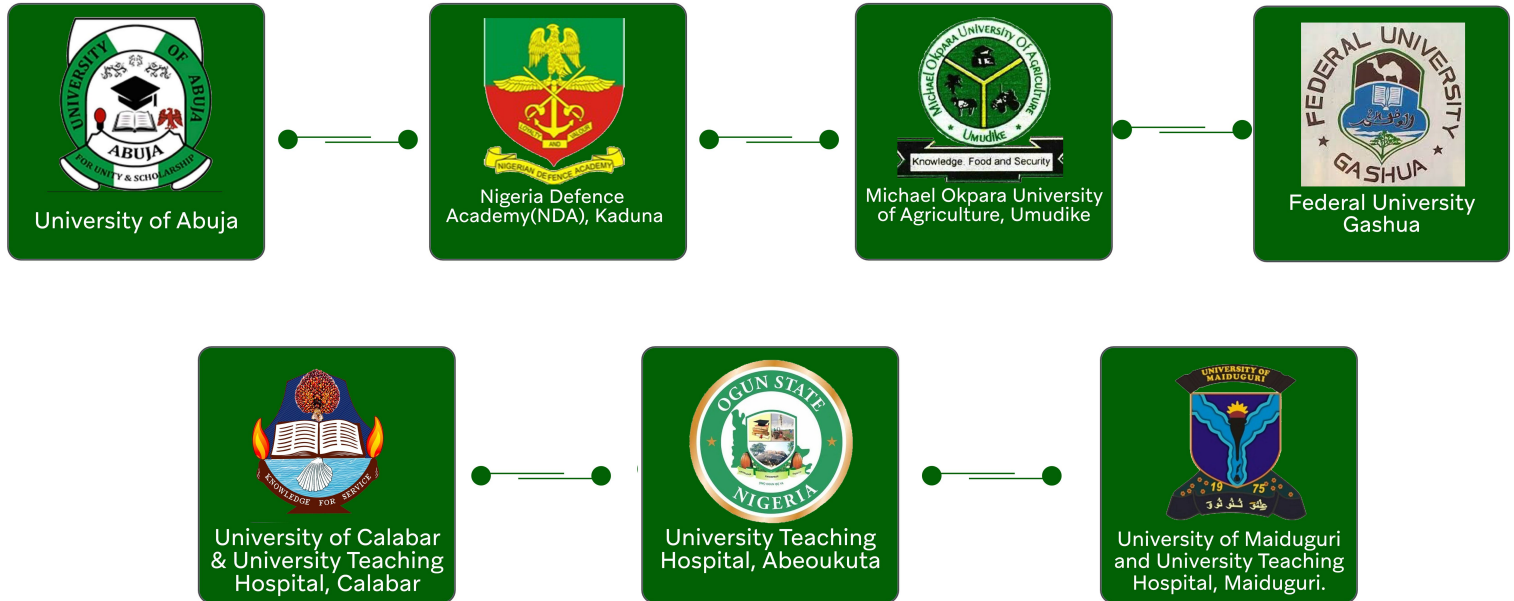
For more enquiries please contact
info@rea.gov.ng
www.rea.gov.ng



RURAL ELECTRIFICATION AGENCY
ENERGY=EMPOWERMENT=EFFICIENCY

2020 Project Impact Report

Signed Term Sheets for EEP Phase II



The signing of Term Sheets kicks off deeper engagements with these EEP Phase II beneficiary institutions. Upon completion, all these institutions will be energized with clean, safe and reliable energy.



RURAL ELECTRIFICATION AGENCY
ENERGY=EMPOWERMENT=EFFICIENCY

2020 Project Impact Report

Launch of Solar Power Naija

The Project is funded through a 140 billion Naira loan facility from the CBN



Electrification of
5 million households
to serve about
25 million Nigerians
in rural areas and
under-served urban
communities



Creation of about
250, 000 jobs
in the energy sector



Increase in local content
in the
off-grid solar value chain
which will include
assembly/manufacturing
of off-grid solutions

*The Rural Electrification Agency (REA) is the implementing Agency of the
Solar Power Naija Programme*



RURAL ELECTRIFICATION AGENCY
ENERGY=EMPOWERMENT=EFFICIENCY

2020 Project Impact Report

Nigeria Electrification Project

- These 3 NEP projects have been delivered under the World Bank-funded Performance-Based Grant (PBG) -

134.64kWp Solar Hybrid Mini-Grid serving Akipelai and Oloibiri in Bayelsa State



Akipelai - 67.32 kWh and Oloibiri - 67.32 kWh. Both of these communities in Bayelsa State are now being powered with a total of 134.64kWp solar hybrid mini-grids. About 364 households are also being served in these communities

234kWp Solar Hybrid Mini-Grid serving Shimankar



Shimankar, Shendom LGA of Plateau State now powered by a 234kWp solar hybrid mini-grid, serving 1,972 households, 273 commercial users in the community, 5 productive users and 9 public users also leverage this intervention.

200 jobs



Over 200 jobs created in the construction phase of these 3 projects.



RURAL ELECTRIFICATION AGENCY
ENERGY=EMPOWERMENT=EFFICIENCY

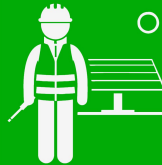
2020 Project Impact Report

NEP Standalone Solar Home Systems (SHS) Component

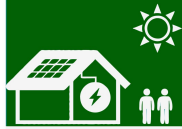
Nigeria Electrification Project



7 new SHS developers signed in under the Output-based Fund (OBF).



This has increased the number of **companies in our portfolio from 12 to 19.**



The target is to electrify **1 million households and 90, 000 MSMEs** through this component.



Rural Electrification Agency (REA)

22 Freetown St, Wuse 2, Abuja

For more enquiries please contact:
info@rea.gov.ng

Like us on facebook
[@REANigeria](#)

Follow us on Twitter
[@realREANigeria](#)